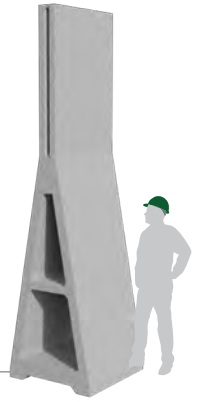


# ALFABLOC®

Instructions for unloading and handling  
5 and 6 metre Alfablocs



**1** The Alfablocs are delivered flat on an artic trailer. The units will have been placed on wooden bearers to allow tines to be positioned underneath them for easy unloading.

In order to ensure a safe lift, position the tines so that the weight is distributed equally on them, taking into account that the base will be heavier than the top.

**2** Gradually lift the Alfabloc off and place on wooden bearers on the ground. Bearers will be required at both the top and base ends.





**3** The bearers at the base of the unit need to be placed parallel to the Alfabloc.



**4** Position the telescopic handler at the base of the Alfabloc. Ensure the handler is straight and completely in line with the Alfabloc.

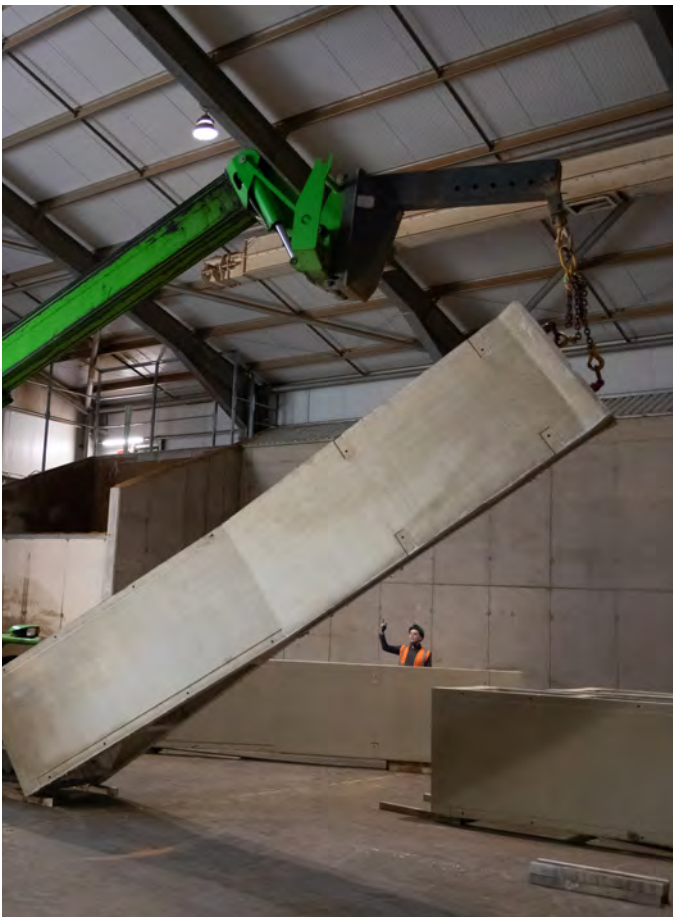
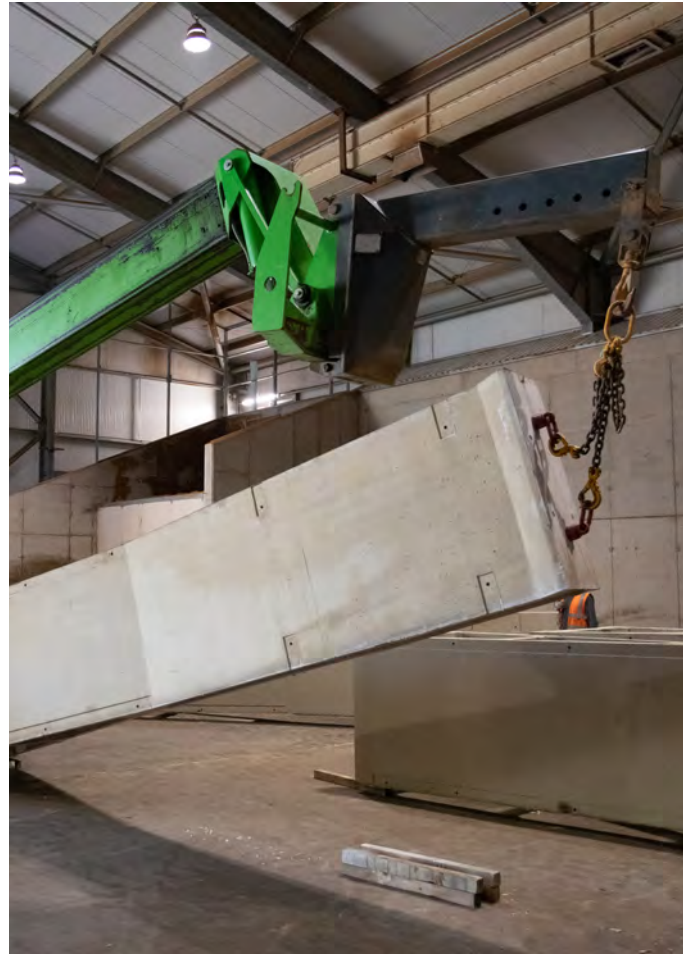


**5** Extend the boom in preparation for attaching lifting chains to the top of the Alfabloc. Ensure only adequately rated swivel hooks and chains are used, suitable for lifting the relevant size Alfabloc (see end of this guide for weight of units).





**6** Once the chains are safely secured begin to slowly raise the boom to get the Alfabloc into an upright position.





**7** Reverse the telescopic handler back gradually as you near the vertical position.



**8** Once vertical, lift the Alfabloc up sufficiently to allow the removal of the wooden bearers.

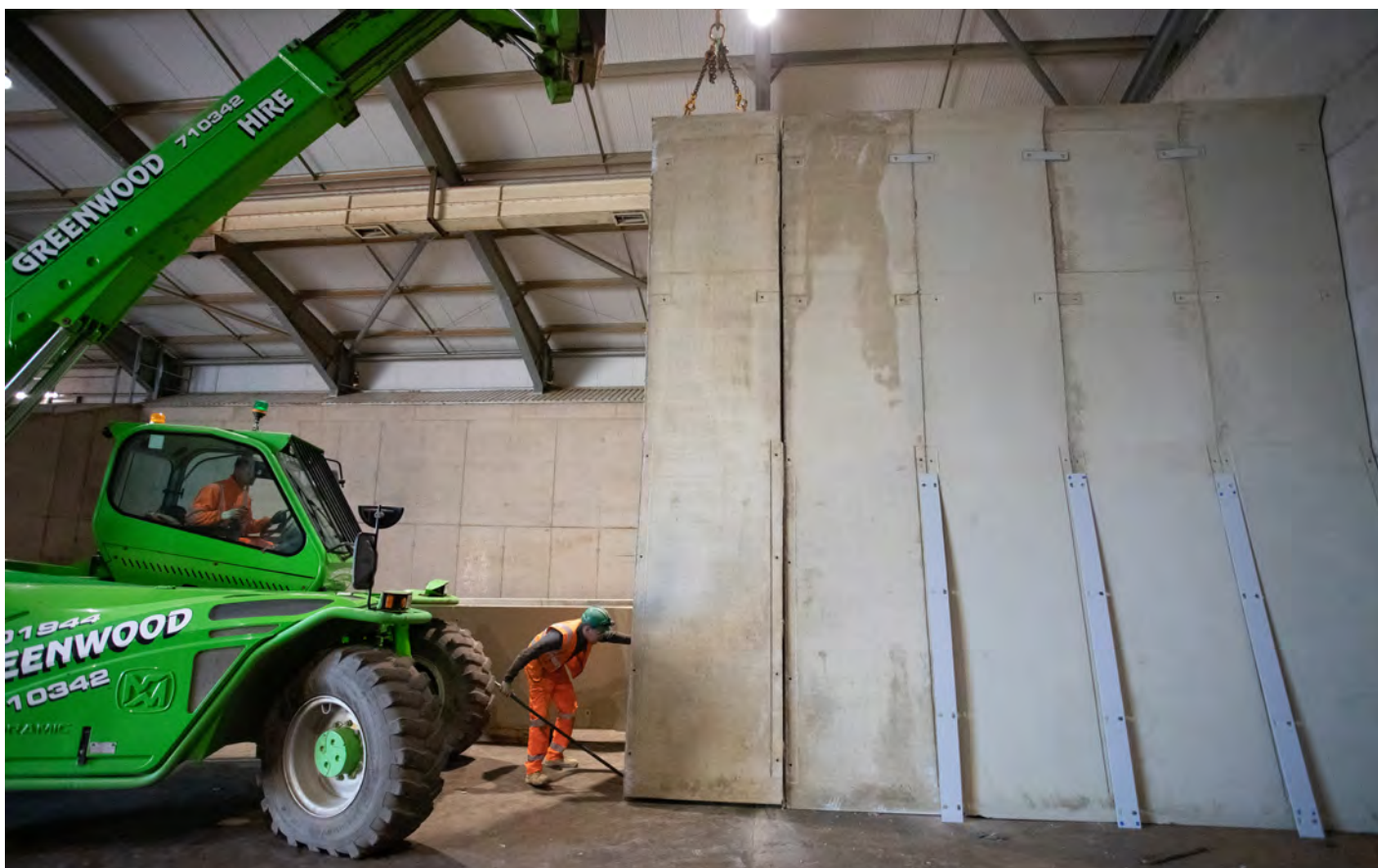


**9** Move the Alfabloc slowly into the correct position.





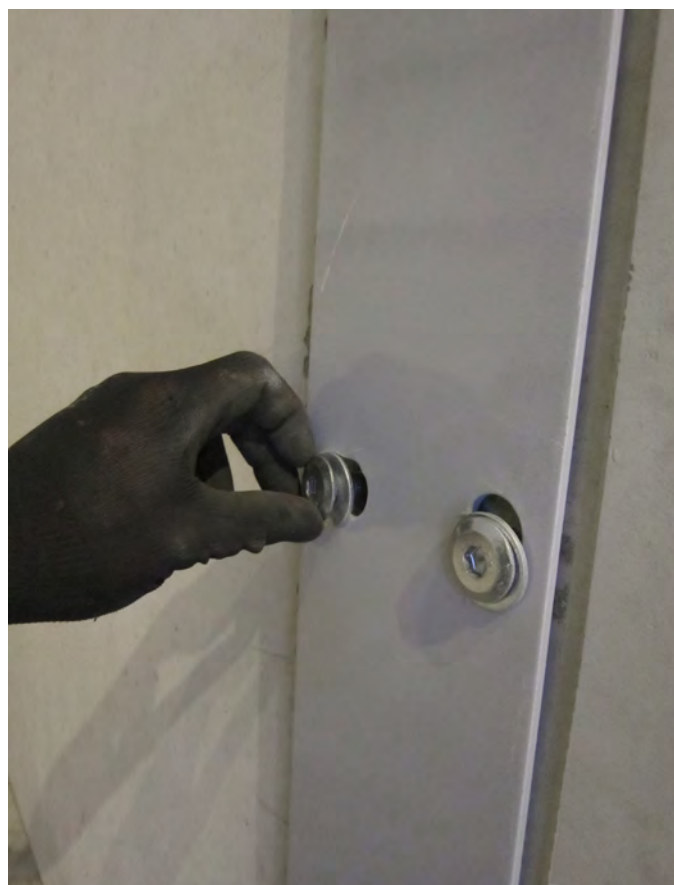
**10** You may need to use a bar to ease the Alfablocc into position, to ensure a tight fit.



**11** Once in the correct position, and ensuring the joint between the neighbouring Alfabloccs is tight, remove the lifting attachments from the top of the Alfablocc.

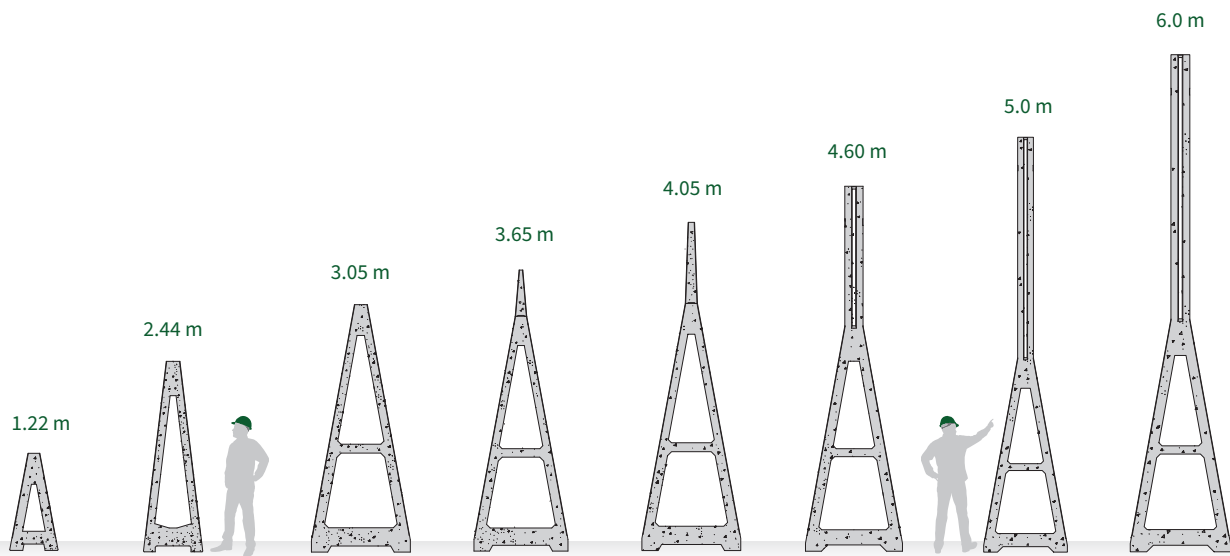


**12** Attach the connecting straps to the Alfabloccs to achieve a secure seal and to spread the load horizontally when being used.



# Dimensions and weights of Alfablocs

Please ensure telehandler or fork lift is of sufficient capacity to lift the weight of the Alfabloc



Height	1220mm	2440mm	3050mm	3650mm	4050mm	4600mm	5000mm	6000mm
Length	2000mm	1220mm	1220mm	1220mm	1220mm	1200mm	1200mm	1200mm
Depth	610mm (at base)	762mm (at base)	1220mm (at base)	1220mm (at base)	1220mm (at base)	1220mm (at base)	1220mm (at base)	1220mm (at base)
Weight	1.64 tonnes	1.90 tonnes	2.94 tonnes	3.11 tonnes	3.29 tonnes	4.11 tonnes	4.50 tonnes	5.29 tonnes

**For further information please contact us on 01449 723150 or email [enquiries@poundfield.com](mailto:enquiries@poundfield.com)**  
Poundfield Precast Limited, The Grove, Creting St Peter, Ipswich, Suffolk IP6 8QG