



Case study

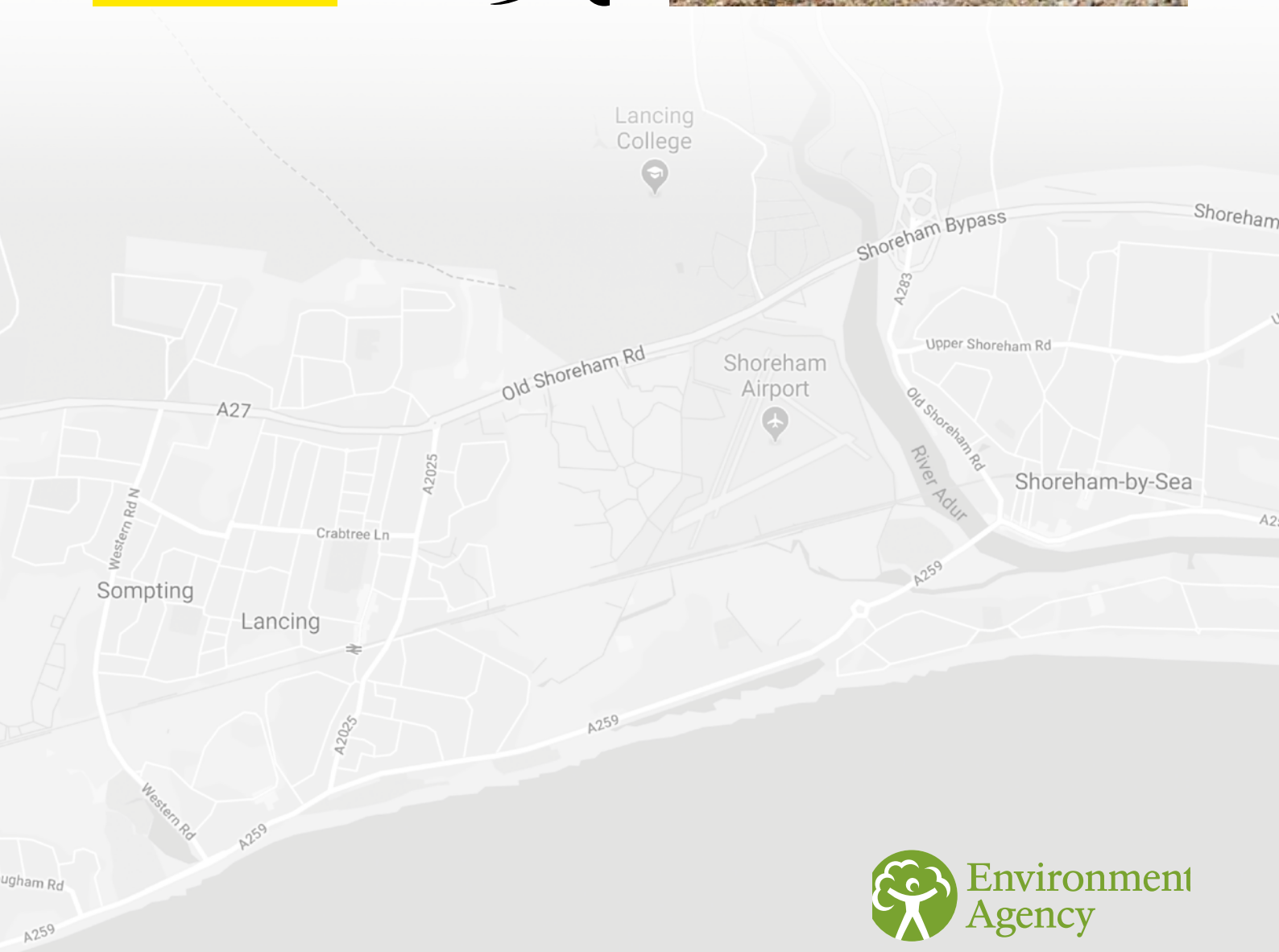
MACKLEY

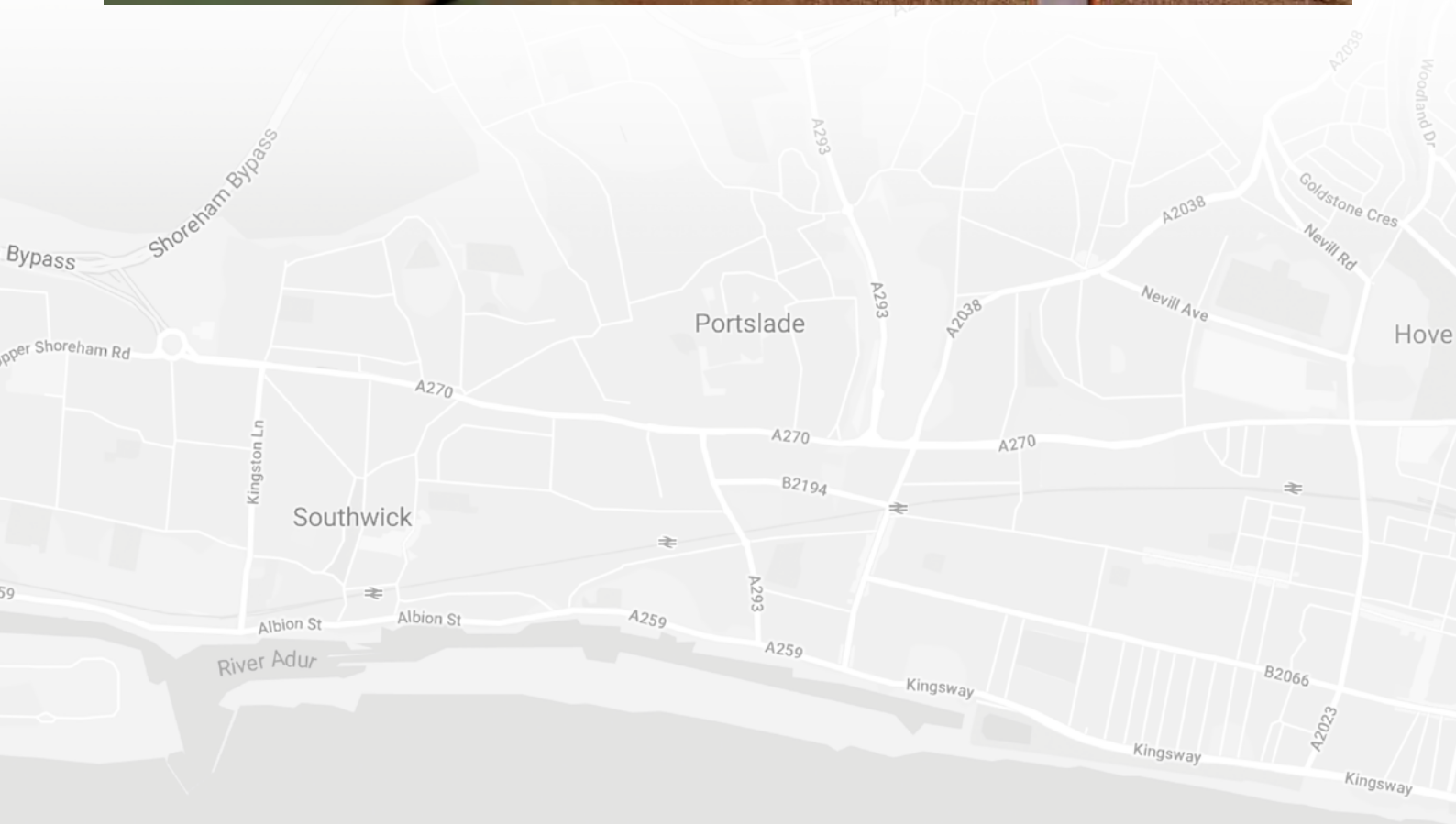
Shoreham Slipway

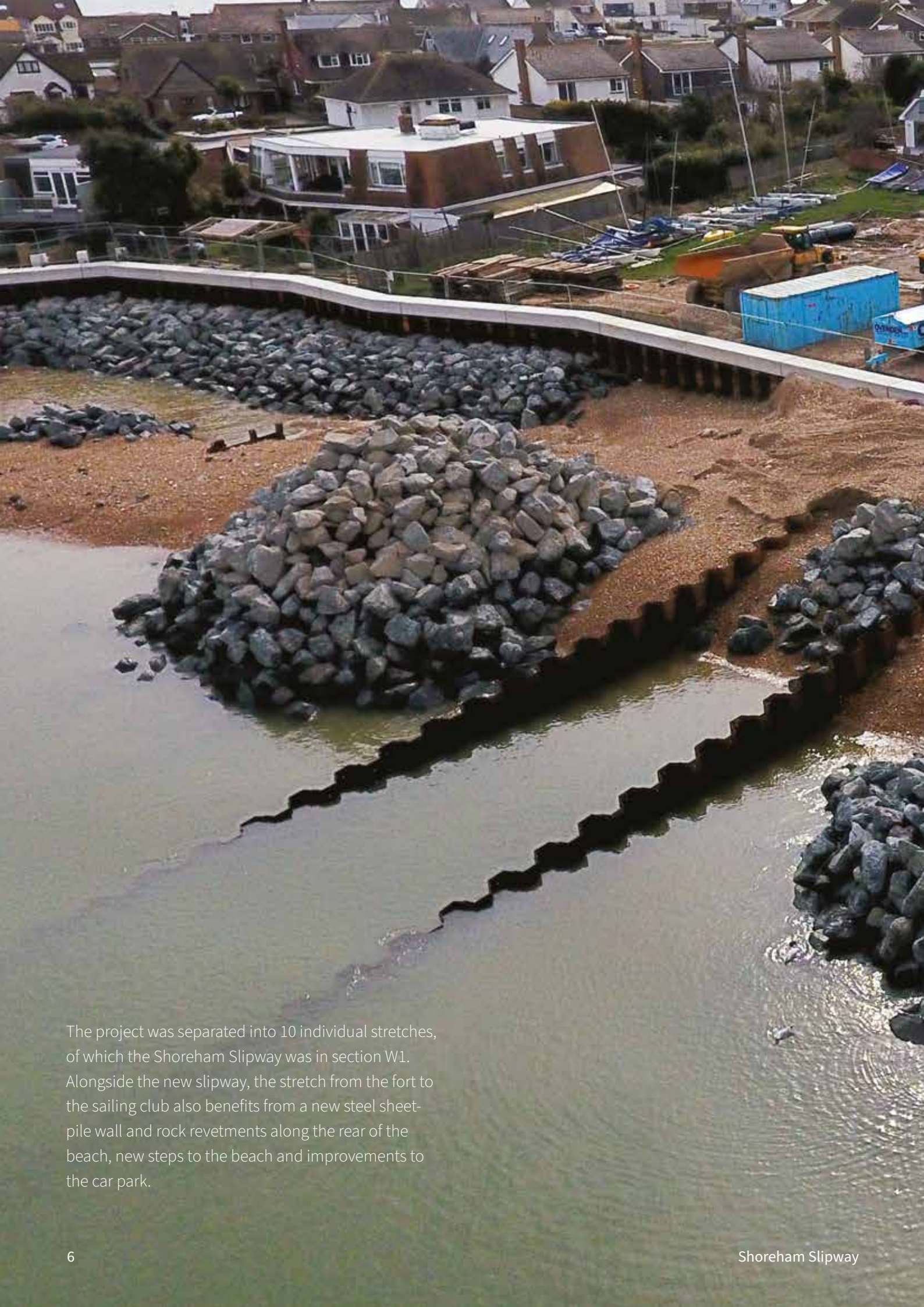
Shoreham-by-Sea, West Sussex

Following flooding in 2013, the £31 million Shoreham Adur Tidal Walls Scheme was devised to address the flood risk, both now and in the future, when the sea level is expected to rise. Conceived by the Environment Agency, Coast to Capital Local Enterprise Partnership, Adur District Council and West Sussex County Council, the project was undertaken by Team Van Oord and led by their member company JT Mackley.

The scheme has seen improvements to the 7.2km stretch of coastline between the Old Fort and the A27. This has reduced the flood risk faced by more than 2,300 properties in Shoreham and East Lancing, and offered protection to vital transport infrastructure in the area, including roads and the airport.







The project was separated into 10 individual stretches, of which the Shoreham Slipway was in section W1. Alongside the new slipway, the stretch from the fort to the sailing club also benefits from a new steel sheet-pile wall and rock revetments along the rear of the beach, new steps to the beach and improvements to the car park.

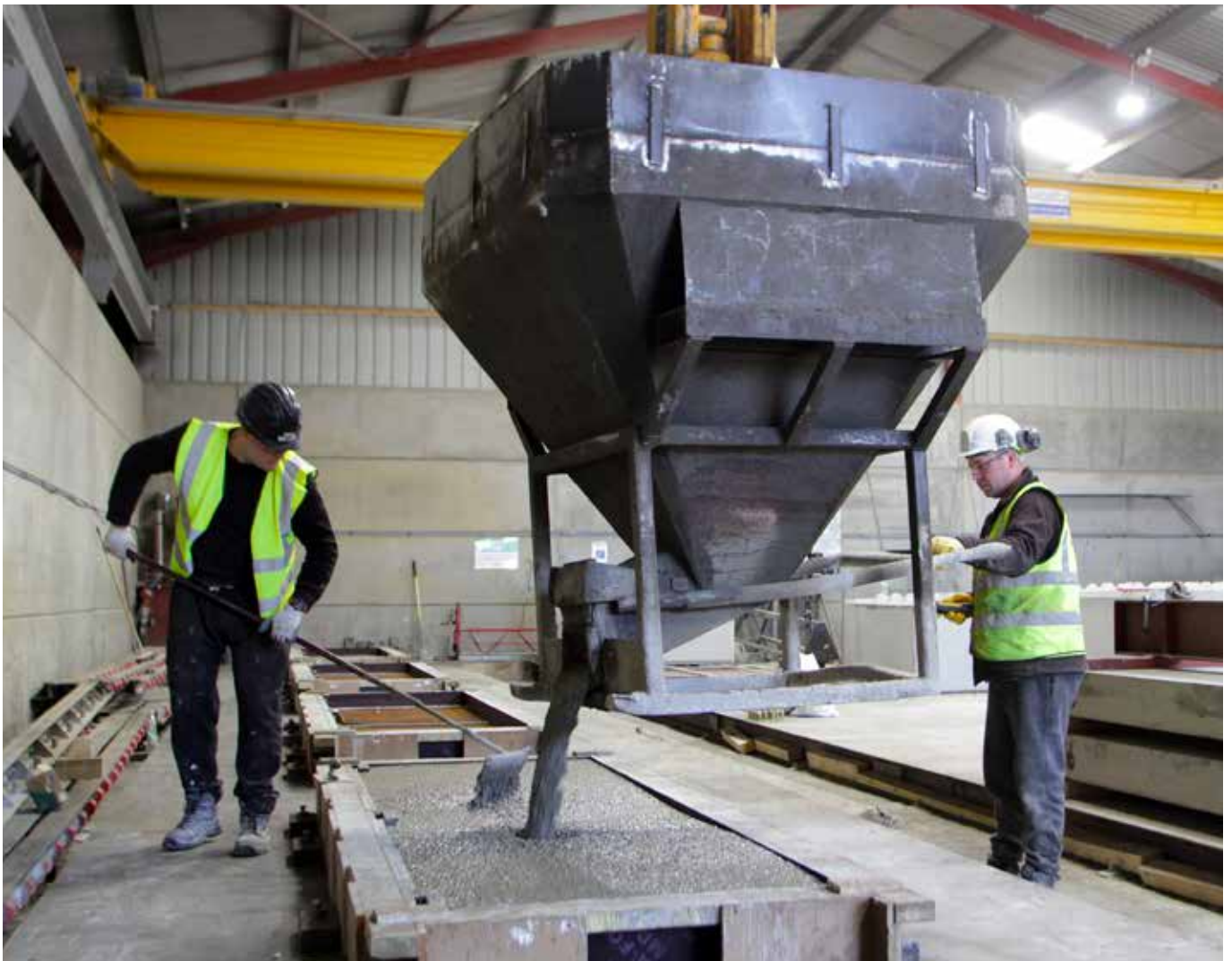






Poundfield Precast were asked to manufacture and deliver 64 capping beams and 112 slipway planks to make up the new slipway. To ensure they are non-slip, the planks required an exposed aggregate finish and channels for effective drainage were incorporated into the design to remove any surface water.

To achieve this, we created nine individual moulds. Operating to very short lead-in times – the moulds and units had to be produced and manufactured in just a week – we were able to deliver the entire order in just a five-week period.







By choosing to pre-cast the units, assembly at the site was simple, allowing the construction to be completed efficiently, within the required timescales.

Since its completion the new slipway has received many compliments, including from Sophie Mackley, Commodore at Shoreham Sailing Club, who described the now longer and wider slipway as ‘a significant improvement’.







© Shoreham Sailing Club

“The slipway has drawn very many compliments both for its extremely pleasing appearance and for its superbly non-slip surface. Many of us consider the new slipway to be the best on the south coast!”

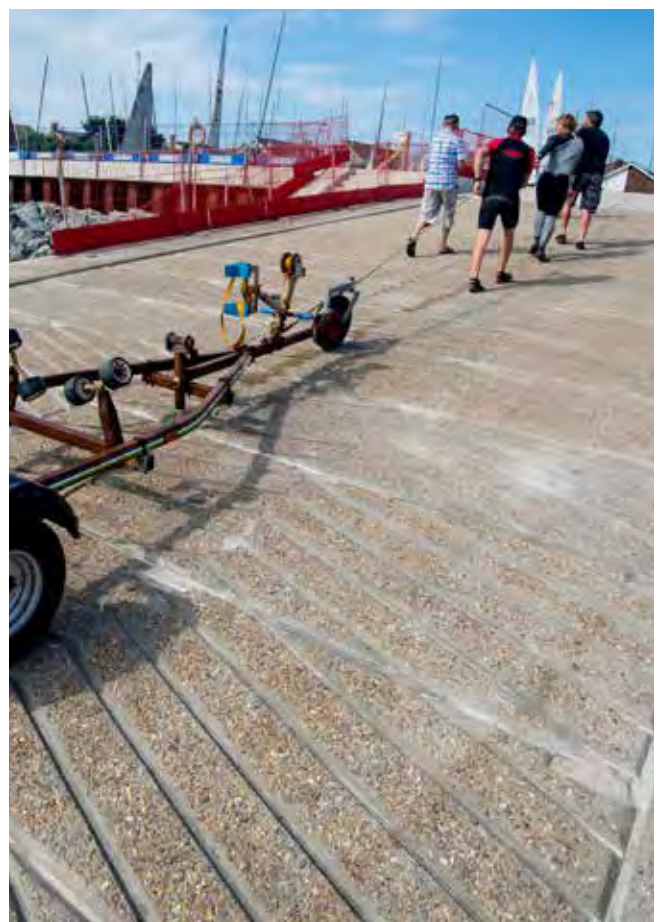
Tony Parker, Director of Engineering, Shoreham Port





The launching facility has also been dubbed by the club as 'one of the best slipways of any sailing club in the UK', testament to the high standards of product and customer service provided by Poundfield Precast.







Our bespoke projects precast concrete department offers a comprehensive service from design through to finish, providing a wide range of solutions for many different construction projects throughout a variety of industries.

We aim to work closely with you to understand your requirements and offer advice to ensure the best method of construction and unit design is achieved.

Our dedicated team has the knowledge and expertise to deal with the challenges of our customers projects.

We are proud to have worked with Mackleys on The Shoreham Slipway and are delighted to have continued our relationship with three new projects.



Shoreham Adur Tidal Walls Scheme



Clay's Lake



Stairs for Shoreham Beach



For further information please contact us on 01449 723150 or email enquiries@poundfield.com
Poundfield Precast Limited, The Grove, Creeting St Peter, Ipswich, Suffolk IP6 8QG