



**POUNDFIELD
PRECAST**
A PPG COMPANY

'INNOVATION in CONCRETE'

ANDERSON

Lime Wood Free School
South East London

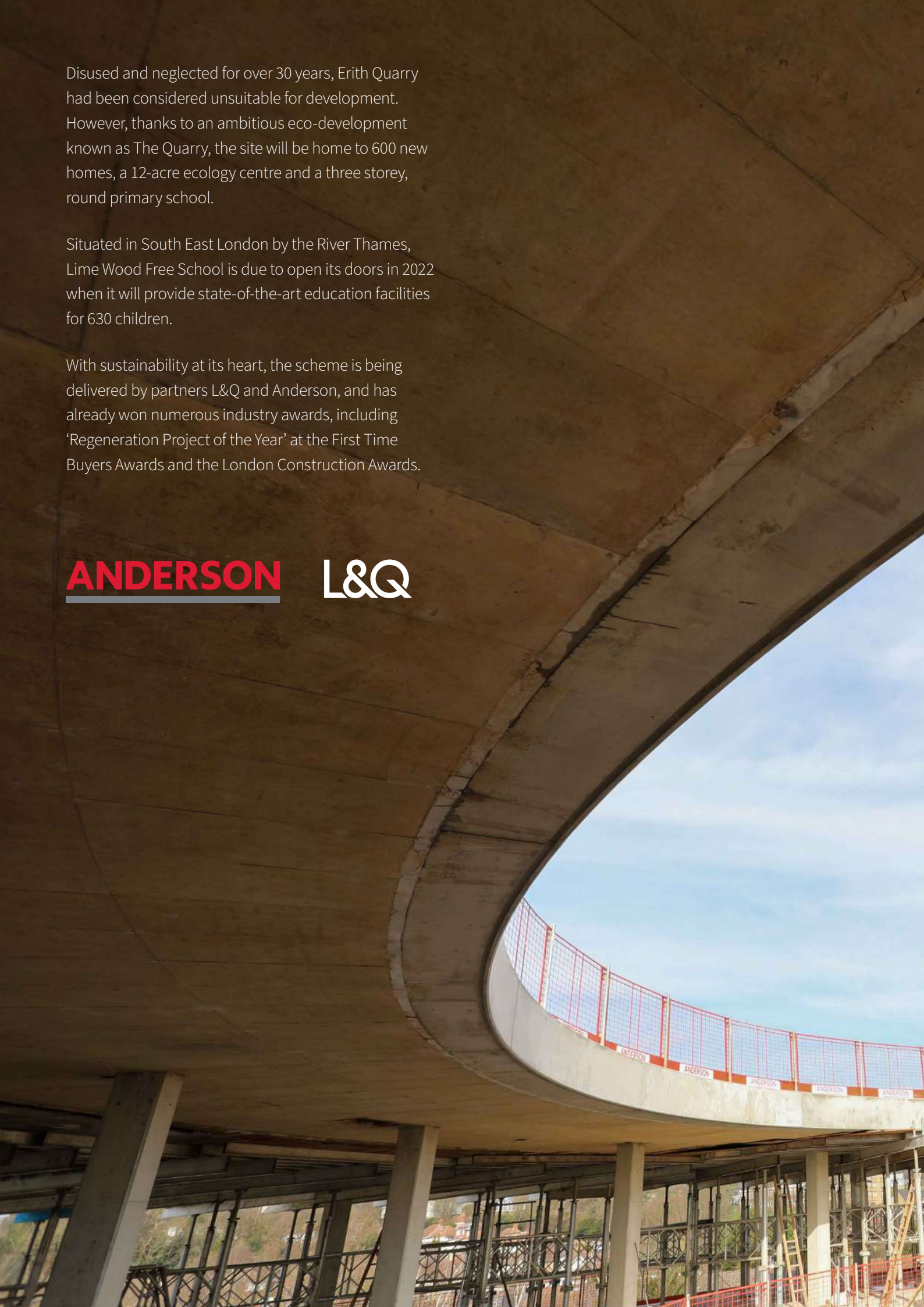
Disused and neglected for over 30 years, Erith Quarry had been considered unsuitable for development. However, thanks to an ambitious eco-development known as The Quarry, the site will be home to 600 new homes, a 12-acre ecology centre and a three storey, round primary school.

Situated in South East London by the River Thames, Lime Wood Free School is due to open its doors in 2022 when it will provide state-of-the-art education facilities for 630 children.

With sustainability at its heart, the scheme is being delivered by partners L&Q and Anderson, and has already won numerous industry awards, including 'Regeneration Project of the Year' at the First Time Buyers Awards and the London Construction Awards.

ANDERSON

L&Q









Manufacturing of the beams

As part of the construction process Poundfield manufactured 83 exterior ring beams for both the ground and first floor on both the internal and exterior faces of the school. In total over 400 tonnes of concrete was used to produce the precast units.

The team at Poundfield worked with the structural engineers from Andersons at the design stage to ensure the best possible methods of producing the precast units was achieved. The project involved the production of 5 timber moulds with a GRP lining to ensure the finish was to the highest of quality.



Set as the focal point of the project, Lime Wood Free School sits at the highest point of the quarry. Built with a combination of concrete, timber and glass, the school has been designed to blend in with its surroundings. Being circular, it maximises natural daylight and provides space for a safe, central courtyard for play.

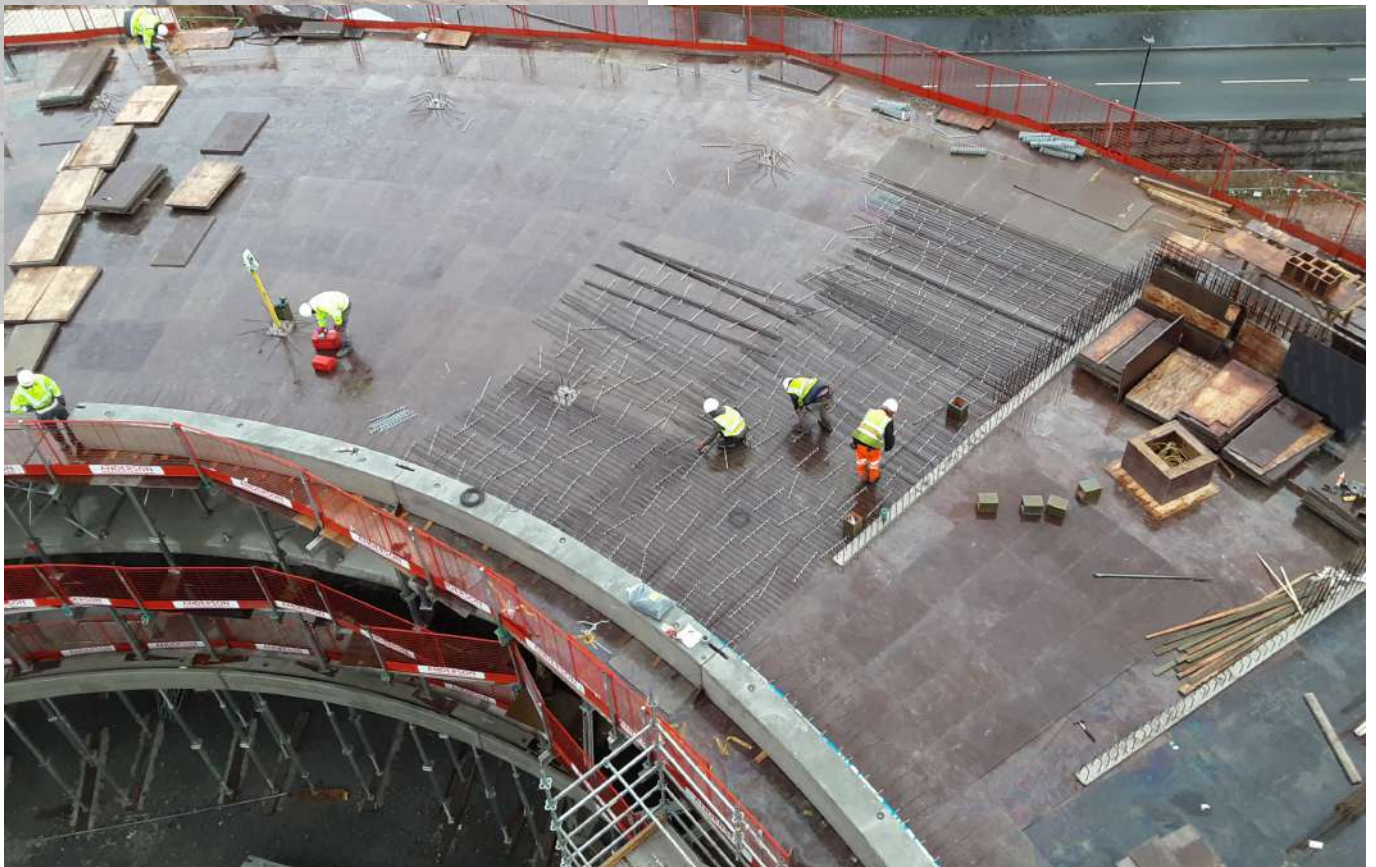






"Weighing in at nearly 5 tonnes each, the rings were too heavy for the tower crane on site and had to be moved into position by a mobile crane. Poundfields ensured the beams were delivered on time and to a planned schedule to avoid any waiting time for the mobile crane."

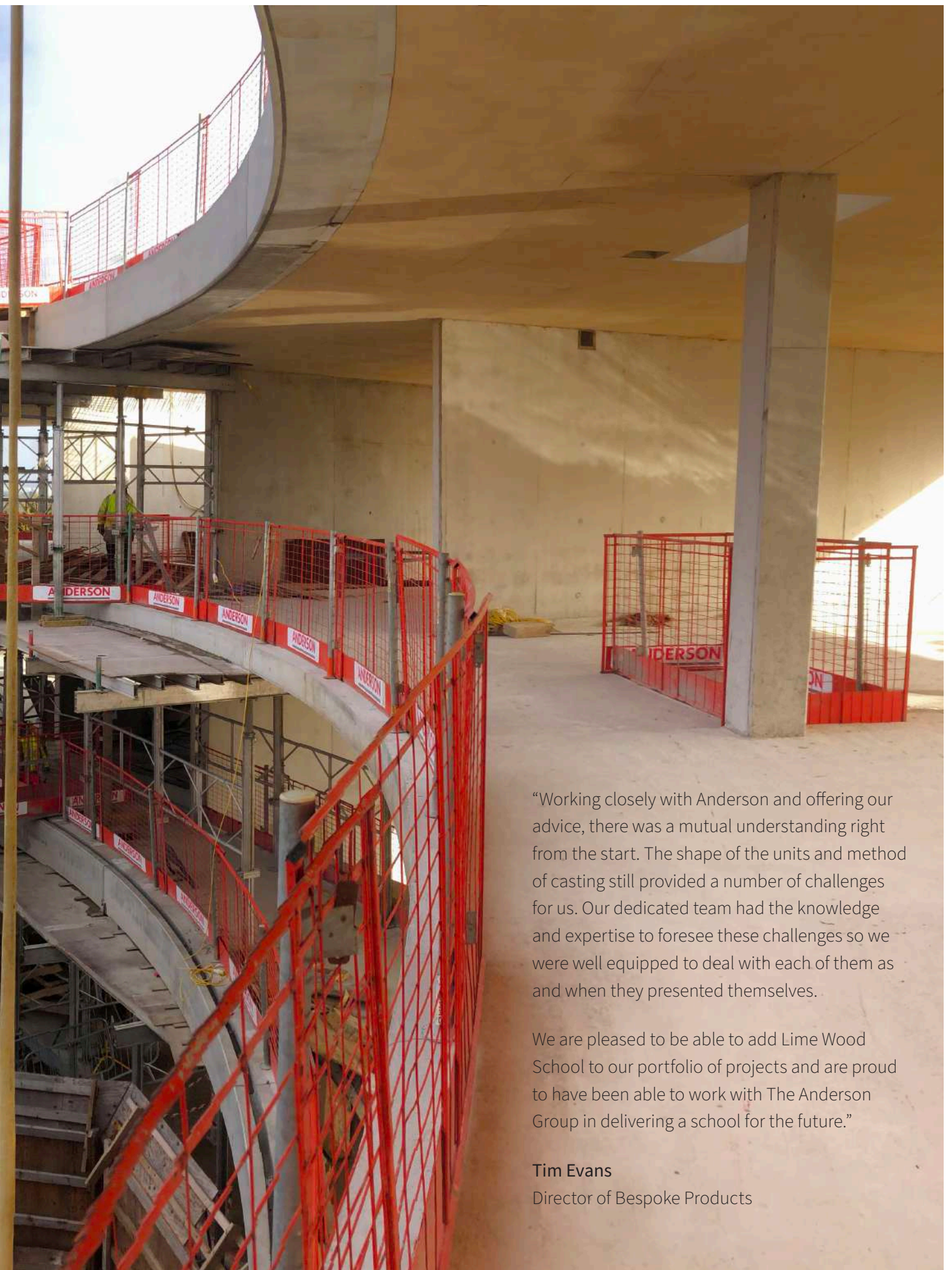
Ylli Profka, Site Manager



“As a bespoke department we pride ourselves on being able to offer a full and comprehensive service. From the very start we knew Lime wood School was going to be a challenging project, one that required pulling all of our departments together to deliver this project on time.

Attending meetings at Andersons head office where we worked with all parties proved to be an advantage and many hours were saved as a result. “





“Working closely with Anderson and offering our advice, there was a mutual understanding right from the start. The shape of the units and method of casting still provided a number of challenges for us. Our dedicated team had the knowledge and expertise to foresee these challenges so we were well equipped to deal with each of them as and when they presented themselves.

We are pleased to be able to add Lime Wood School to our portfolio of projects and are proud to have been able to work with The Anderson Group in delivering a school for the future.”

Tim Evans

Director of Bespoke Products



For further information please contact us on 01449 723150 or email enquiries@poundfield.com

Poundfield Precast Limited, The Grove, Creeting St Peter, Ipswich, Suffolk IP6 8QG