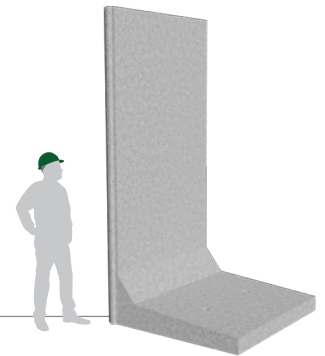


L-BLOC[®]

Instructions for handling and installation



1 L-blocs are delivered on a flat bed vehicle, nested in twos, threes or fours.



2 L-blocs should be unloaded using a suitable fork-lift truck or telehandler.

NB Ensure that loader is sufficient capacity to lift the blocks. See L-bloc weights on last page of these instructions.



3 The wooden batons used to separate the L-blocs on the vehicle should be placed on a suitable flat surface and used to sit the L-bloc on prior to lifting the bloc upright.



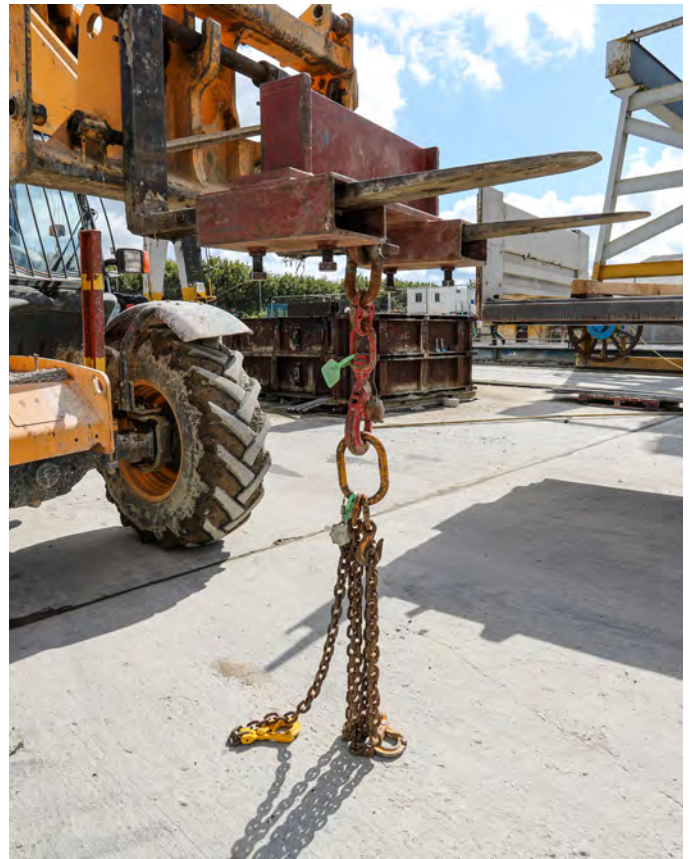
4 Attach lifting brackets to flat surfaces of the L-bloc using countersunk bolts proved in the 4 pre-threaded holes in the L-blocs.



5 Attach a lifting chain or lifting straps to the lifting brackets using D-links. Ensure that the two sides of the chain/straps are of equal length and securely fastened, to ensure a level and safe lift.



6 Use a suitable forklift tine to lift the L-bloc upright.



7 Lift L-bloc slowly, balancing the weight on the heel of the L-bloc.

NB if lifting the L-block on a hard surface (e.g. concrete) it may be advisable to place a rubber mat or wooden batons under the heel of the block to avoid damage.



8 Slowly raise the L-bloc as the weight transfers to the foot of the unit.

NB Lifting chains/straps should remain as close to vertical as possible throughout the lifting process.



9 Once the L-bloc is upright, it can be lifted clear of the ground and transported to its final position.

Nb it is advisable to lift L blocs upright as close as possible to their intended final position to minimise the distance that a suspended L-bloc has to be carried.



10 Once in position lower the L-bloc into place.



11 Remove the lifting brackets and attach to next L-bloc.



12 If required holes can be drilled in the ground beneath the L-bloc (through the 4 holes in the L-bloc foot) to allow threaded fixing bars to be used to hold the L-bloc in position.



13 These holes should be filled with resin prior to insertion of fixing bars.



14 Repeat process for subsequent L-blocs. When positioning an L-bloc locate the tongue of the suspended block into the channel in the side of the installed bloc whilst the new bloc is still above ground level.



15 Lower L-bloc slowly into position ensuring that the blocs remain interlocked. This may require external assistance.

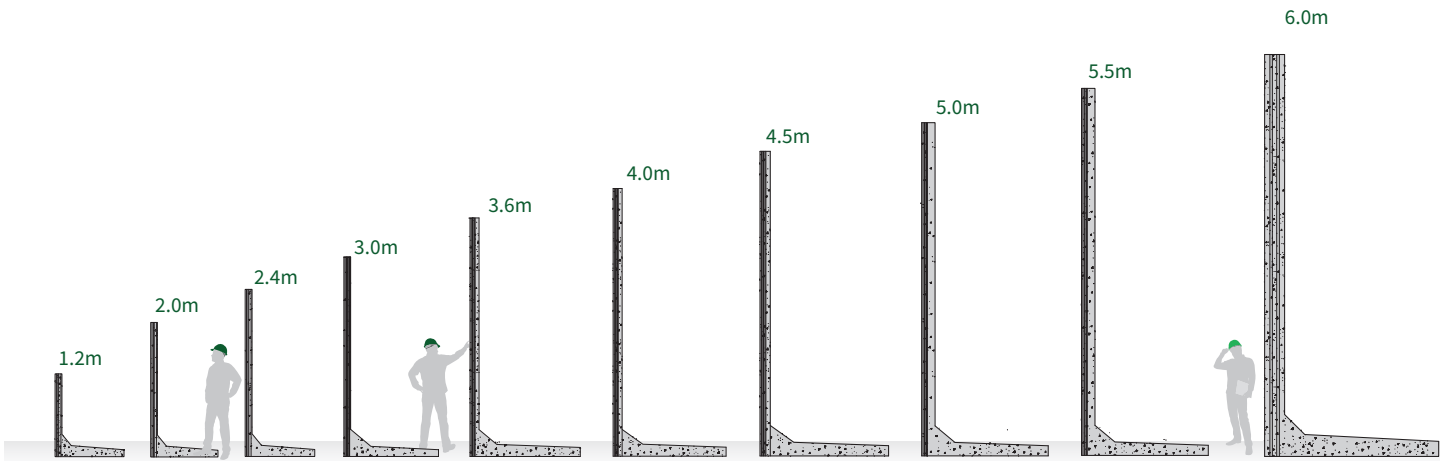


16 Once installed the L-blocs fit neatly together.



Dimensions and weights of L-blocs

Please ensure telehandler or fork lift is of sufficient capacity to lift the weight of the L-bloc



Height	1200mm	2000mm	2400mm	3000mm	3600mm	4000mm	4500mm	5000mm	5500mm	6000mm
Length	1000mm	1000mm	1000mm	1000mm	1000mm	1000mm	1000mm	1000mm	1000mm	1000mm
Depth	100mm	100mm	100mm	100mm	150mm	150mm	150mm	200mm	200mm	300mm
Weight	0.60 tonnes	0.80 tonnes	0.90 tonnes	1.24 tonnes	2.16 tonnes	2.31 tonnes	2.49 tonnes	3.29 tonnes	3.53 tonnes	6.00 tonnes